

SHORELINE VILLAGE, LONG BEACH, CA



AT PARKERS' LIGHTHOUSE

*...every table comes  
with a view.*

Book your next event with Parkers' Lighthouse  
*...you invite the guests and we will do the rest!*



Parkers' Lighthouse offers the  
most compelling selection of  
globally inspired cuisine prepared with  
the freshest ingredients derived  
from local sources.



**PARKERS' LIGHTHOUSE** is a full service, contemporary seafood restaurant and bar serving lunch, dinner, cocktails, and private functions. The restaurant delivers high quality, fresh fish and seafood, as well as premium beef and chicken, and pasta dishes with attentive service in a relaxed atmosphere. Parkers' is located in a dramatic, free-standing building with an outstanding waterfront location at the point of Shoreline Village in Long Beach, California. The building's layout provides multiple opportunities for customers to enjoy Parkers' variety of drinking and dining venues. Breathtaking views of the Queen Mary and out to San Pedro Bay are experienced at the many dining areas in the restaurant. Parkers' Lighthouse offers the most compelling selection of globally inspired cuisine prepared with the freshest ingredients derived from local sources. Whether you dine with us for lunch or dinner, you can always find sustainable seafood choices on our vast menu.

Parkers' Lighthouse recently completed a 3 million dollar remodel and modernization project, transforming the décor to a contemporary, elegant space while still keeping the historic feel of the restaurant. The interior décor features warm wood textures with turquoise and green accents, complimented by earth and sand tones. In tribute to the history of Long Beach, Parkers' Lighthouse lines its walls with vintage photos of the city and harbor, dating from the 1930's through the 1950's. There are two main private dining spaces offered for events, *The Lantern Room*, seating up to 60 guests, and the *Queensview Room*, seating up to 100 guests. In addition to the private dining spaces Parkers' Lighthouse has a main dining room and outside patio that each seat up to 140 guests. There are several other smaller segmented areas available for smaller groups as well.

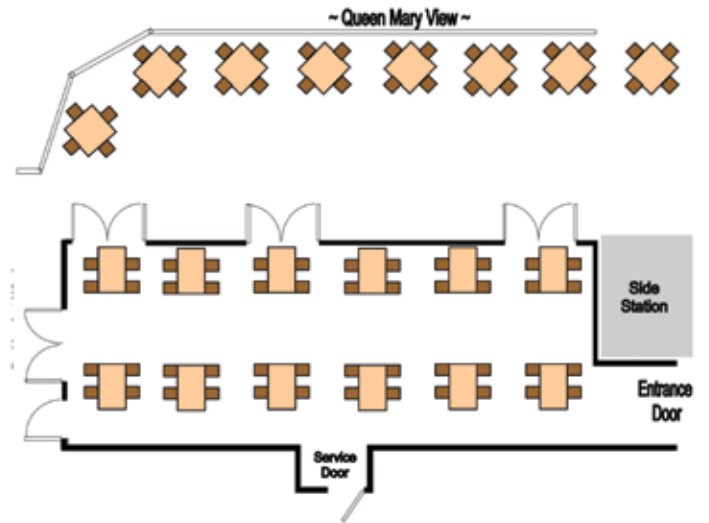


*Wine Cellar*



*Queensview Room – Bar*

# Lantern Room



*Queen Mary View*

L

ocated on the first floor our *Lantern Room* is our most popular private dining space for small groups ranging from 15 to 60 guests. In front of the Lantern Room is a small patio space that can be rented out in addition to the room. This patio gives an additional 32 seats and is equipped with heat lamps. Guests can enjoy a spectacular view of the Long Beach Harbor with the Queen Mary in the background. This room is ideal for meetings, celebrations, rehearsal dinners and small corporate functions.



*Standard Set-up Seats 60*

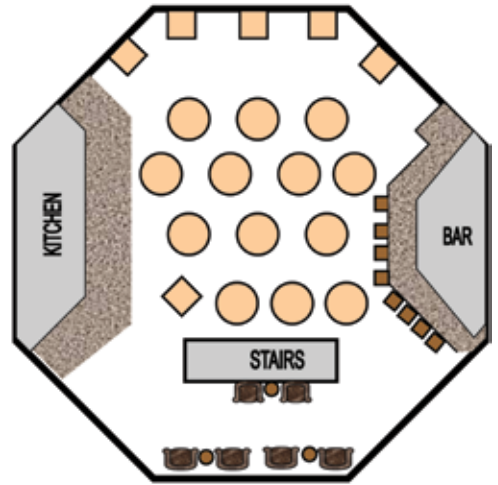


*Seats 48 guests*



*Large Square Set-up Seats 36*

# Queensview Room



The *Queensview Room* is our premiere private dining space offering a 360 degree view of the Harbor. Located on the 3rd Floor, this room can accommodate groups up to 100 guests on square tables of 4 or round tables of 6. On the city side of the space there is a small lounge area equipped with couches and lounge tables. This area can also be used for a band or DJ.



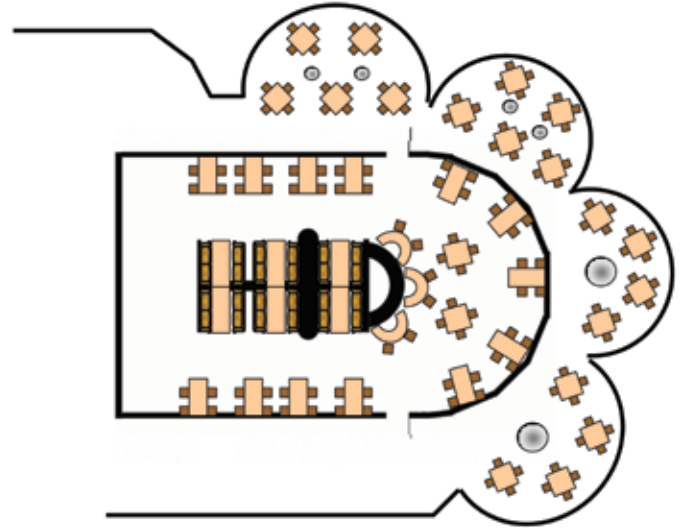
*Lounge Area*



*Queen Mary View*



# Main Dining Room



The main dining room is located on the 1st floor and offers a spectacular panoramic view. This room can accommodate up to 120 guests and up to 200 using the outside patios in front of the room.



## OUTDOOR PATIO COVES

Parkers' Lighthouse has a beautiful outdoor patio that wraps around the ocean side of the building. The entire patio cove holds a maximum of 72 guests. The patio can be rented out as a whole or as small coves for groups of 16 - 20. Each patio dining space is equipped with heat lamps or fire pits to keep guests comfortable on cooler nights. This is an ideal space for wedding ceremonies, showers or corporate events.

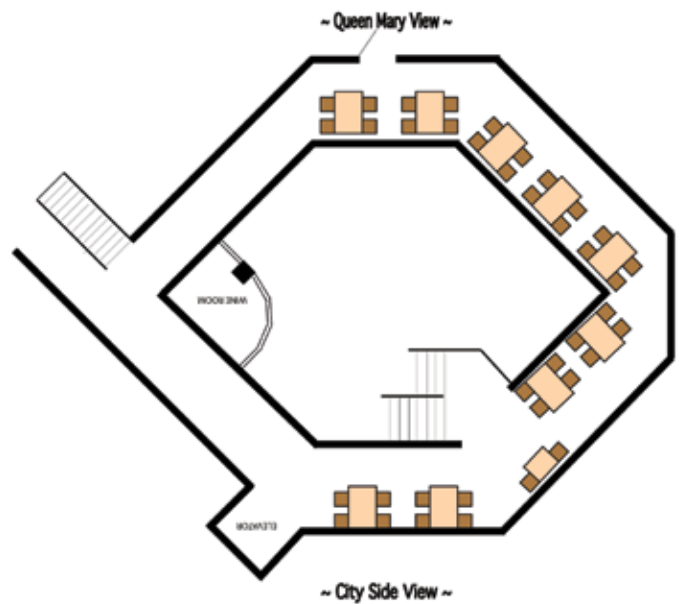


Parkers' Lighthouse, Shoreline Village, Long Beach, CA

# 2nd Floor Gallery



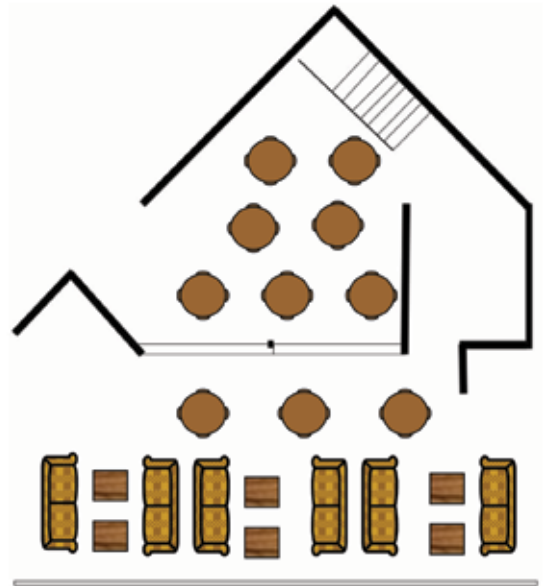
Our elevated loft-style gallery overlooks the entire restaurant and bar and provides a semi-private space for groups up to 40. It is a great space for cocktail receptions or small gatherings that want a space away from the main dining room. There is a view of the Queen Mary and City on either side of the space.



# Queen Mary Room and Patio Lounge



Our patio and lounge space is perfect for cocktail receptions up to 60 guests. This is a great open space with a combination of lounge and cocktail seating as well as indoor and outdoor space.



SHORELINE VILLAGE, LONG BEACH, CA



[www.parkerslighthouse.com](http://www.parkerslighthouse.com)

Parkers' Lighthouse...  
every table  
comes with a  
waterfront  
view

435 Shoreline Village Drive, #1 | Shoreline Village  
Long Beach, CA 90802

**Phone:** 562.432.6500 | **Fax:** 562.436.3551

**E-mail:** [banquetinfo@parkerslighthouse.com](mailto:banquetinfo@parkerslighthouse.com)

